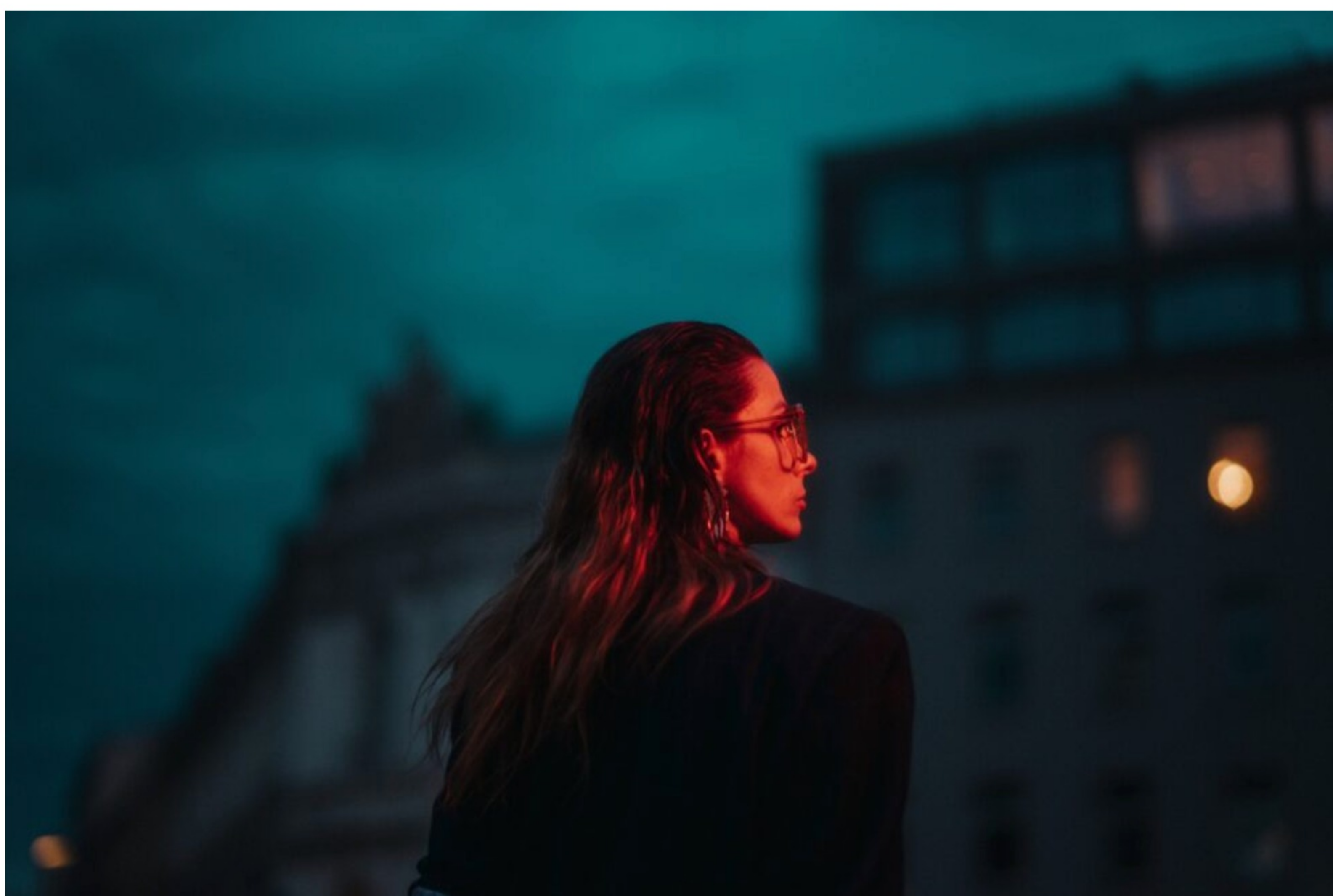


Unveiling the Shadows: 6 Key Signs Your Loved One Might be Abusing Adderall

by Grand Falls Center For Recovery | Dec 31, 2023 | Uncategorized



With stimulant drugs like Adderall being used to treat attention deficit hyperactivity disorder (ADHD), many people may not realize the dangerous effects associated with their misuse or abuse of this medication. Unfortunately, because it is so widely prescribed and accessible, Adderall addiction can be easy to fall into without noticing until it's too late.

That's why knowing the warning signs of an Adderall problem can help you recognize if your friend or family member needs help before they spiral farther down into substance abuse issues. A better understanding of these indicators of problematic use can save a person from potential physical and mental health issues related to misusing this powerful drug.

We'll explore 6 key signs that a loved one might be abusing Adderall and what action steps should come next if suspect something more serious is going on than recreational use.

Look for drastic changes in mood and behavior

It is important to pay attention to any drastic changes in mood and behavior, as they can signal underlying issues that require attention. While everyone has their ups and downs, sudden and extreme shifts may be indicative of mental health concerns or other underlying conditions.

Some of these changes include:

- Irritability and agitation
- Increased aggression or hostility
- Unusual bursts of energy followed by extreme fatigue
- Withdrawal from social activities and isolation
- Changes in sleep patterns (insomnia or excessive sleeping)

These changes may be particularly concerning if they occur in individuals who do not typically exhibit such behaviors. If you notice drastic changes in someone's mood or behavior, it is crucial to approach them in a professional and non-judgmental manner and encourage them to [seek support](#) and guidance from a trained professional.

Notice any physical differences in your loved one's appearance

Adderall abuse can also have physical effects on an individual's appearance. These changes may include:

- Sudden weight loss or weight gain
- Signs of malnutrition (e.g. brittle hair and nails, dry skin)
- Dilated pupils
- Excessive sweating
- Skin irritation or rashes (from crushing and snorting the medication)

These physical changes may be a result of the drug's impact on the body, such as suppressing appetite and causing dehydration. If you notice these physical differences in someone who is taking Adderall, it is essential to talk to them about their medication usage and encourage them to seek help if necessary.

Notice the signs of addiction

Addiction is a serious issue that affects people from all walks of life. It can be defined as a compulsive behavior that a person feels they cannot control, despite negative consequences. One key indicator of addiction is cravings, a strong desire or urge to engage in the addictive behavior or consume the substance.

Another sign is the loss of control, where the person is unable to stop or limit their use, even when they know it is harmful. Dependence is also a tell-tale sign, where the individual requires the substance or behavior to feel normal or function. It is important to be aware of these signs of addiction, as it can develop quickly and have devastating effects on a person's health, relationships, and overall well-being.

Observe if there is secrecy or dishonesty about their use of Adderall

As a professional, it is important to observe elements of honesty and secrecy in our interactions with others. When it comes to the use of Adderall, there is a potential for both to be present. Given that Adderall is a controlled substance often prescribed for attention-deficit hyperactivity disorder (ADHD), there may be individuals who misuse or abuse it for its stimulant effects.

It is important to approach the topic with sensitivity and openness, as there may be valid reasons for its use. However, if there are signs of secrecy or dishonesty regarding its use, it is necessary to address the issue and potentially [seek further intervention](#) or support for the individual involved.

Contact Grand Falls Center for Recovery Today

Taking any steps towards helping a loved one with Adderall addiction can be difficult, but it's critically important. Your immediate focus should be to monitor your loved one's behavior and physical condition.

Your well-intentioned interventions may feel uncomfortable or awkward, but they are steps you must take if you suspect your loved one's potential abuse of Adderall – even if you don't end up being right – because at the end of the day, these actions could save their life. Reach out to [Grand Falls Center for Recovery](#) for advice and support on how to handle the situation in the best way possible.

Recovery is possible, and [we are here to help](#). So even if you're not sure whether there is an issue or problem, don't hesitate to contact us today. We can [provide guidance and resources](#) that can make a significant difference in your loved one's life. Let's work together towards a better, healthier future for your family and those you care about.

Site Map

[Home](#)
[Who We Are](#)
[What We Treat](#)
[Who We Help](#)
[Privacy Policy](#)

Treatment

[Detox](#)
[Inpatient](#)
[Dual Diagnosis](#)
[Aftercare](#)

Contact

5615 W. 32nd Street
 Joplin, MO 64804
 1-855-904-5910

What We Treat

[Heroin](#)
[Opioids](#)
[Cocaine](#)
[Alcohol](#)

Who We Help

[Men](#)
[Women](#)
[LGBTQ](#)
[Professionals](#)

Areas We Serve

[Jefferson City](#)
[Springfield, MO](#)
[Kansas City](#)
[Chesterfield](#)

Latest Posts

[Finding Help For The Whole Family In Addiction Recovery Support](#)

[The Importance of Support: How Staff and Peers Can Help You Through the Detox Journey at an Addiction Treatment Center](#)

[Reconnecting with Yourself: The Importance of Self-Discovery After Alcohol Rehab](#)

[How Addiction Rehab Treatment Addresses the Psychological and Biological Factors](#)

[The Power of Community: Finding Support and Connection in Addiction Treatment](#)

You Need

